



**ACCORDO QUADRO DELLA DURATA DI ANNI TRE PER LA
MANUTENZIONE DELLE STRADE DI COMPETENZA
PROVINCIALE**

***PROGETTO DI FATTIBILITA' TECNICO-
ECONOMICA***

CARTA STRADALE DELL'AREA

LOTTO 4: Manutenzione AREA 4 "Sud" – CIG n. _____

I Progettisti: Arch. Massimo Betti

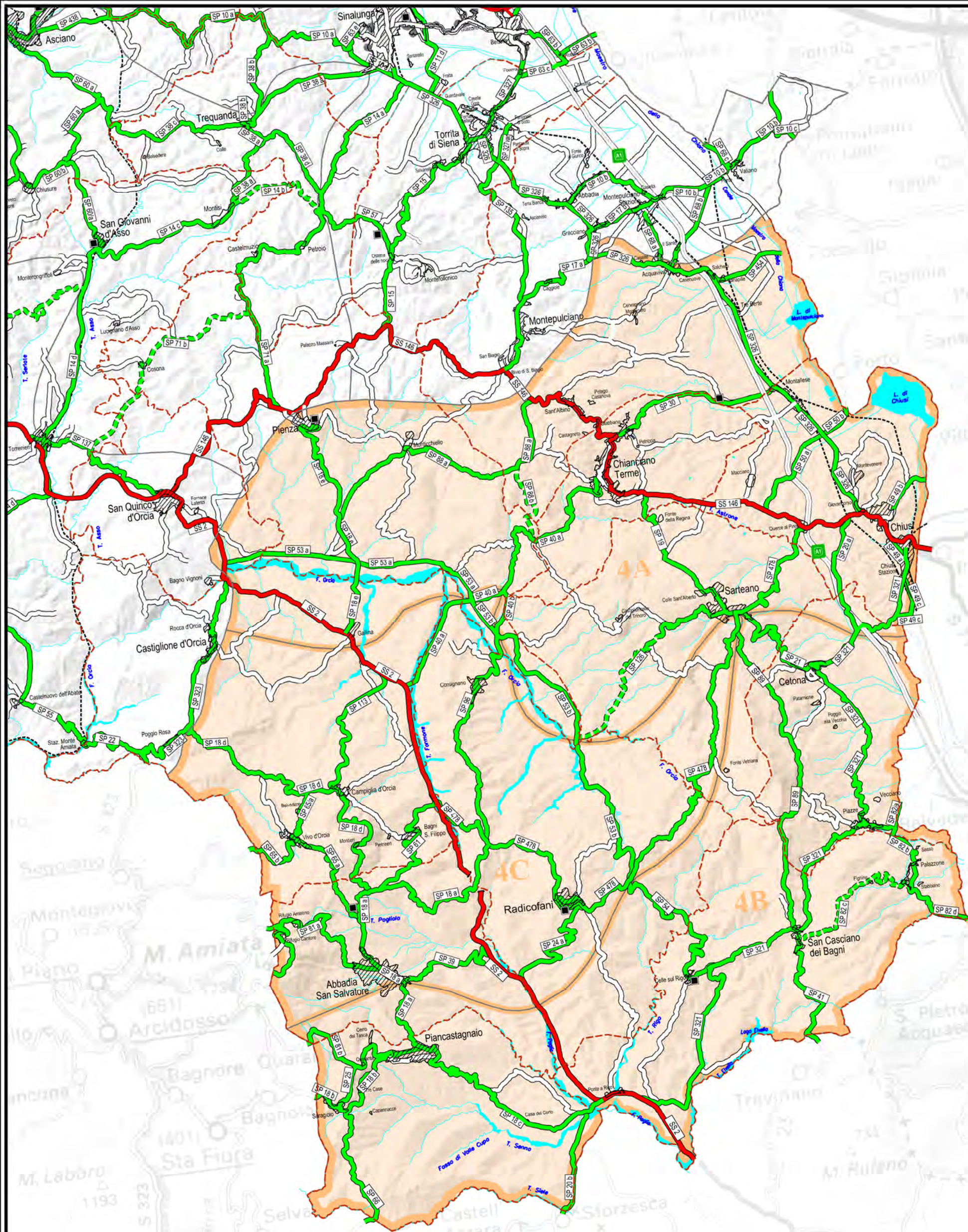
Geom. Simone Lisi

Il Responsabile Unico del Progetto

Arch. Massimo Betti

Siena, maggio 2025

Elaborato N. **2**



PROVINCIA DI SIENA
Servizio Mobilità Provinciale

Piazza Duomo, 9 - 53100 SIENA
Tel. 0577 2411 - Fax 0577 241202


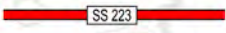
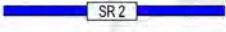
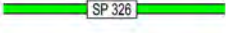
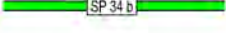

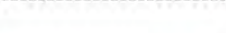


**CARTA STRADALE
DELLA PROVINCIA DI SIENA**

**AREA 4
SUD**

Scala 1:150.000

Settembre 2020



-  **AUTOSTRADE**
-  **STRADE STATALI**
-  **STRADE REGIONALI**
-  **STRADE PROVINCIALI**
-  **STRADE STERRATE PROVINCIALI**
-  **STRADE COMUNALI E LOCALI**
-  **FERROVIE**
-  **CONFINI COMUNALI**
-  **MAGAZZINO PROVINCIALE
MANUTENZIONE STRADALE**